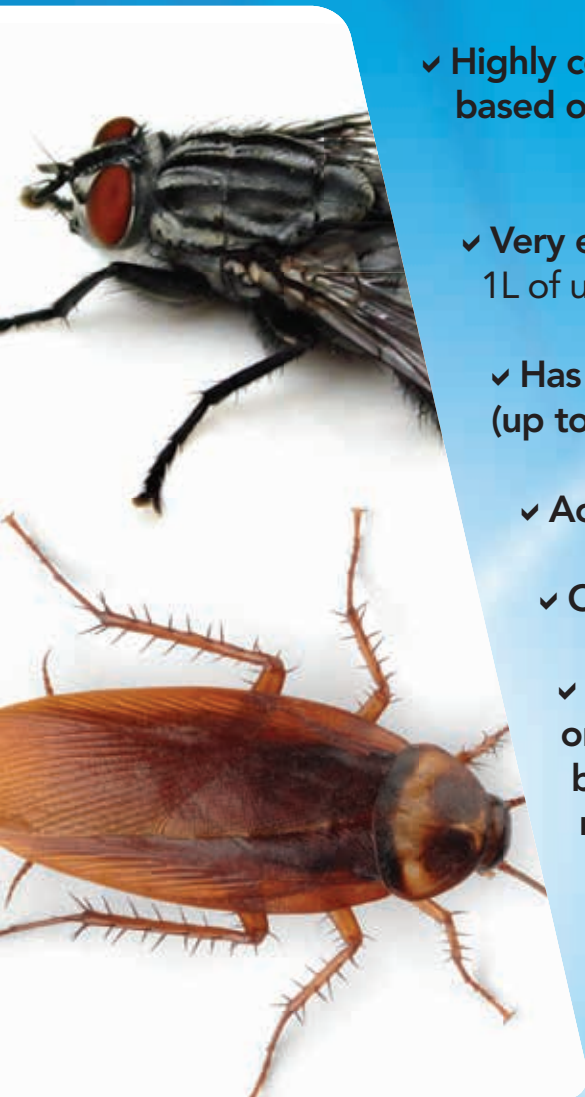


PARAMOUCHE

**APPROVED INSECTICIDE LARVICIDE EFFECTIVE
AGAINST FLYING AND CRAWLING INSECTS
(BEETLES, FLIES, LICE, FLEAS,
MOSQUITOES, SPIDERS...)**



- ✓ Highly concentrated formula based on Permethrin 100g/L
- ✓ Very economical:
1L of undiluted product per 1,000m²
- ✓ Has a shock-treatment effect, with good lasting power (up to 12 weeks)
- ✓ Acts on contact and through ingestion
- ✓ Can be thermonebulized
- ✓ The Permethrin used in Paramouche is one of the least toxic active substances to man, birds and mammals, irrespective of the means of exposure (through direct contact, respiration)
- ✓ Application possible in the presence of animals
 - In areas out of their reach
 - Without direct application on the animals

Manufacturer

 **LABORATOIRES
A.C.I.**
Un laboratoire au service des professionnels

Lieu dit sibilot CD6 - 13480 Cabriès - FRANCE
Tél : +33.(0)4.42.94.92.40



PARAMOUCHE

APPROVED INSECTICIDE LARVICIDE EFFECTIVE
AGAINST FLYING AND CRAWLING INSECTS
(BEETLES, FLIES, LICE, FLEAS,
MOSQUITOES, SPIDERS...)

1 - INSTRUCTIONS FOR USE:

- By spraying: dilute 1L to 1.5L of PARAMOUCHE in 50L of water to treat 1,000m³. Do not spray directly on animals.
- Approximately 0.1L per 100m² of surface area.
- Via thermonebulization or non-thermal nebulization dilute 250ml of PARAMOUCHE in 10 litres of water to treat 10,000m³.
- Permethrin is used in ointments to treat scabies in humans.

2 - PHYSICOCHEMICAL PROPERTIES:

- Clear liquid, light pale colour, solvent form.
- Stable at room temperature and at high temperatures and in the presence of light.
- Flashpoint (in a vacuum): 72°C. Not classified as flammable.
- Forms a white emulsion that remains stable over time.
- Density at 20°C: 0.87 ± 0.025.
- Permethrin composition: 100g/L.

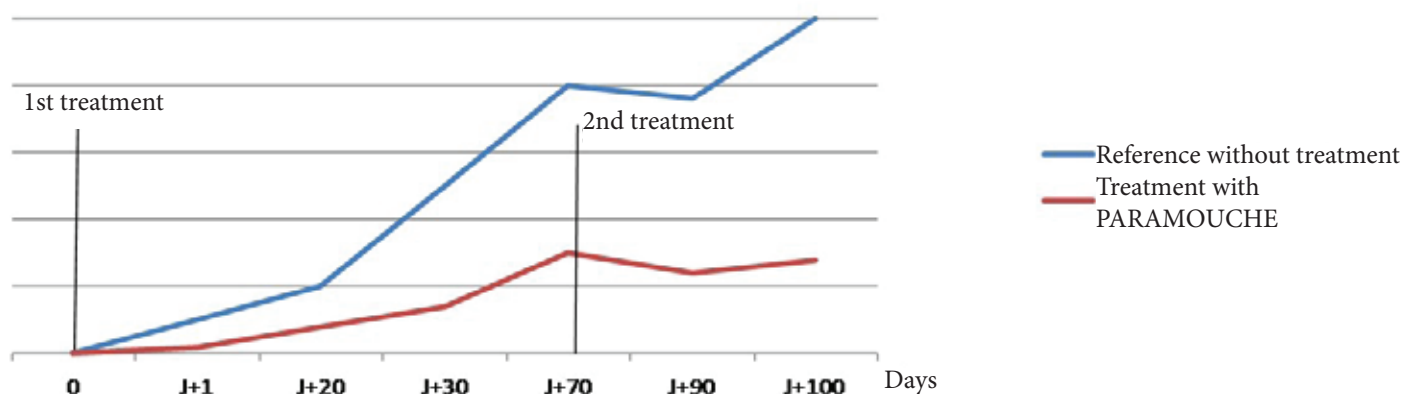
3 - SAFETY/ENVIRONMENT:

- Harmful if ingested, irritant for the skin and eyes.
- DL 50 oral (Permethrin) for rats in corn oil: 4,672mg/kg.
- Avoid inhaling the fumes.
- Treated food and drinking troughs must be rinsed with water.
- Keep the product in its original packaging.
- Toxic for aquatic organisms, may have harmful long term effects on aquatic environments.
- Follow recommended usage doses.
- Avoid disposing of the packaging in the environment.
- Ensure packaging is removed by an approved service provider.

4 - APPLICATIONS:

- **PARAMOUCHE** is effective against flying and crawling insects and their larvae:
 - flies, wasps, horseflies, mosquitoes, etc.
 - cockroaches, roaches, ants, darkling beetles, etc.
 - lice, fleas...
- **PARAMOUCHE** is effective against arachnids:
 - spiders, mites (ticks, ...).

TEST CONDUCTED ON FLIES IN LAYING HEN PRODUCTION HOUSES



Manufacturer

 **LABORATOIRES
A.C.I.**
Un laboratoire au service des professionnels

Lieu dit sibilot CD6 - 13480 Cabriès - FRANCE
Tél : +33.(0)4.42.94.92.40

**FABRIQUÉ
EN FRANCE**